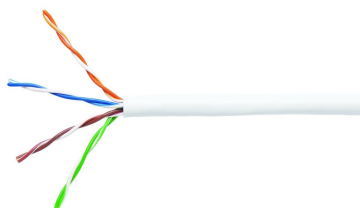


# 6-57826-2 | CS24R WHT C5E 4/24 U/UTP CPK 1KFT

---



Copper Cable, category 5e, 4 pair, UTP, 350 MHz, CMR rated, 1000 ft pull-box, white

## Product Classification

<b>Regional Availability</b>	Asia
<b>Portfolio</b>	NETCONNECT®
<b>Product Type</b>	Twisted pair cable
<b>Product Series</b>	520 Series

## General Specifications

<b>Product Number</b>	520R
<b>ANSI/TIA Category</b>	5e
<b>Cable Component Type</b>	Horizontal
<b>Cable Type</b>	U/UTP (unshielded)
<b>Conductor Type, singles</b>	Solid
<b>Conductors, quantity</b>	8
<b>Jacket Color</b>	White
<b>Pairs, quantity</b>	4
<b>Transmission Standards</b>	ANSI/TIA-568.2-D   CENELEC EN 50288-6-1   ISO/IEC 11801 Class D

## Dimensions

<b>Cable Length</b>	304.8 m   1000 ft
<b>Diameter Over Jacket, nominal</b>	4.699 mm   0.185 in
<b>Conductor Gauge, singles</b>	24 AWG

## Electrical Specifications

<b>Operating Voltage, maximum</b>	80 V
<b>Remote Powering</b>	Fully complies with the recommendations set forth by IEEE 802.3bt (Type 4) for the safe delivery of power over LAN cable when installed according to ISO/IEC 14763-2, CENELEC EN 50174-1,

# 6-57826-2 | CS24R WHT C5E 4/24 U/UTP CPK 1KFT

CENELEC EN 50174-2 or TIA TSB-184-A

Safety Voltage Rating 300 V

## Electrical Cable Performance

CS	CommScope		
STD	Refers to the standard value listed under Transmission Standards in the Electrical Specifications above		
TYP	Typical Electrical Performance		
IL	Insertion Loss (dB/100m)	NEXT	Near End Crosstalk (dB/100m)
ACR	Attenuation to Crosstalk Ratio (dB/100m)	PSNEXT	Power Sum Near End Crosstalk (db/100m)
PSACR	Power Sum Attenuation to Crosstalk Ratio (dB/100m)	ACRF	Attenuation to Crosstalk Ratio - Far End (dB/100m)
PSACRF	Power Sum Attenuation to Crosstalk Ratio - Far End (dB/100m)	RL	Return Loss (dB)
TCL	Transverse Conversion Loss (dB/100m)	ELTCTL	Equal Level Transverse Conversion Transfer Loss (dB/100m)

Freq. MHz	IL	NEXT	ACR	PSNEXT	PSACR	ACRF	PSACRF	RL
	STD	STD	STD	STD	STD	STD	STD	STD
1	2	65.3	63.3	62.3	60.3	63.8	60.8	20
4	4.1	56.3	52.2	53.3	49.2	51.8	48.8	23
8	5.8	51.8	46	48.8	43	45.7	42.7	24.5
10	6.5	50.3	43.8	47.3	40.8	43.8	40.8	25
16	8.2	47.2	39	44.2	36	39.7	36.7	25
20	9.3	45.8	36.5	42.8	33.5	37.8	34.8	25
25	10.4	44.3	33.9	41.3	30.9	35.8	32.8	24.3
31.25	11.7	42.9	31.2	39.9	28.2	33.9	30.9	23.6
62.5	17	38.4	21.4	35.4	18.4	27.9	24.9	21.5
100	22	35.3	13.3	32.3	10.3	23.8	20.8	20.1

## Material Specifications

Conductor Material	Bare copper
Insulation Material	Polyolefin
Jacket Material	PVC

## Environmental Specifications

Operating Temperature	-20 °C to +60 °C (-4 °F to +140 °F)
Environmental Space	Non-plenum

## Packaging and Weights

Cable weight	32.74 kg/km   22 lb/kft
Packaging Type	Pull box

## Regulatory Compliance/Certifications

Agency	Classification
--------	----------------

# 6-57826-2 | CS24R WHT C5E 4/24 U/UTP CPK 1KFT

---

CHINA-ROHS

Below maximum concentration value

REACH-SVHC

Compliant as per SVHC revision on [www.commscope.com/ProductCompliance](http://www.commscope.com/ProductCompliance)

ROHS

Compliant

